



MPA ENGAGE

**Engaging Mediterranean key actors in Ecosystem Approach to
manage Marine Protected Areas to face Climate Change
Impacts**

Elena Ojea & Francesca Barazzetta
Future Oceans Lab, CIM-Universidade de Vigo

Vulnerability is the propensity or predisposition of a system to be adversely affected by climate change.

- Our system is an MPA and the approach combines ecological and social vulnerability.
- The vulnerability of a system depends on 3 main components:



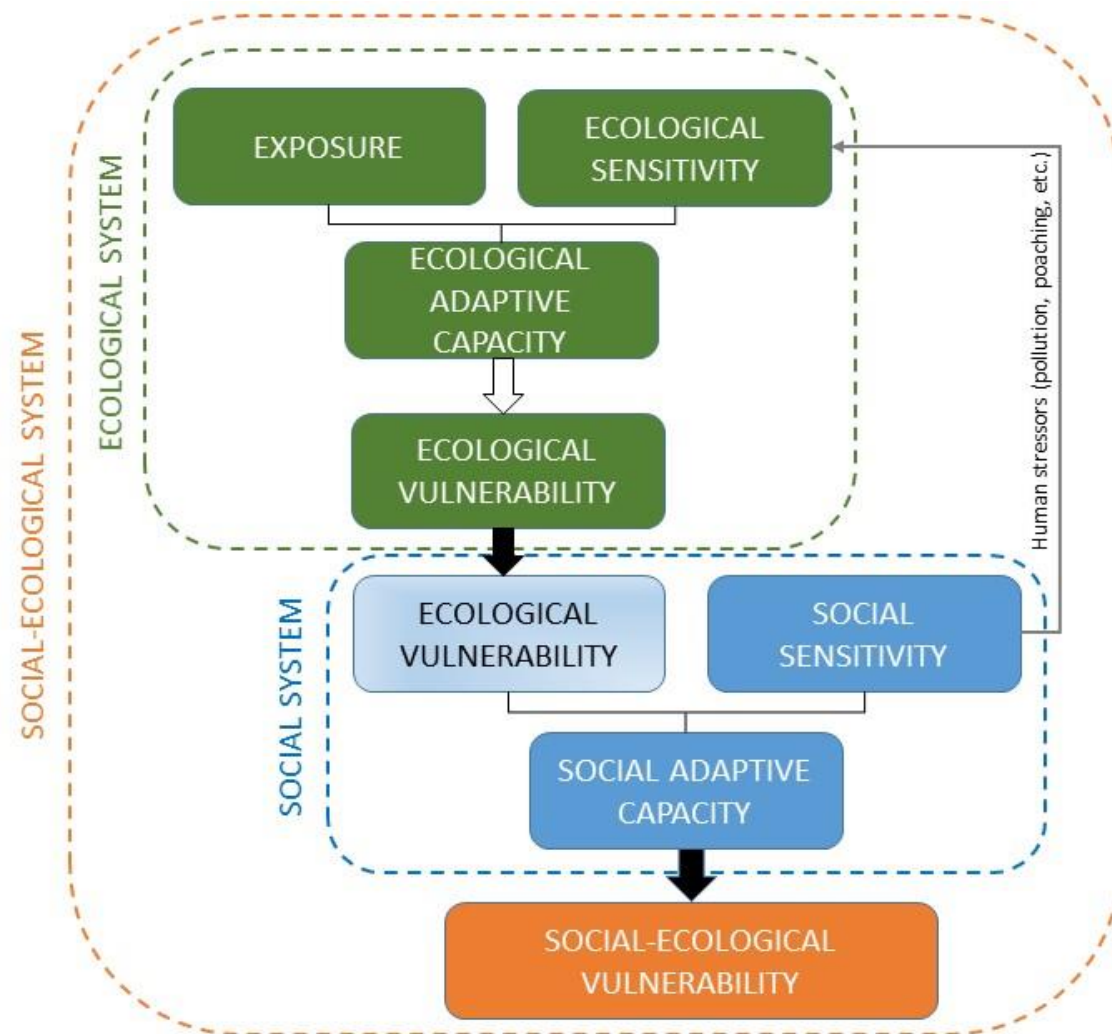
Exposure



Sensitivity



Adaptive capacity



VULNERABILITY DIMENSIONS

ECOLOGICAL EXPOSURE

Degree of exposure of the system to the impacts of climate hazards in terms of magnitude, frequency, duration or extent.



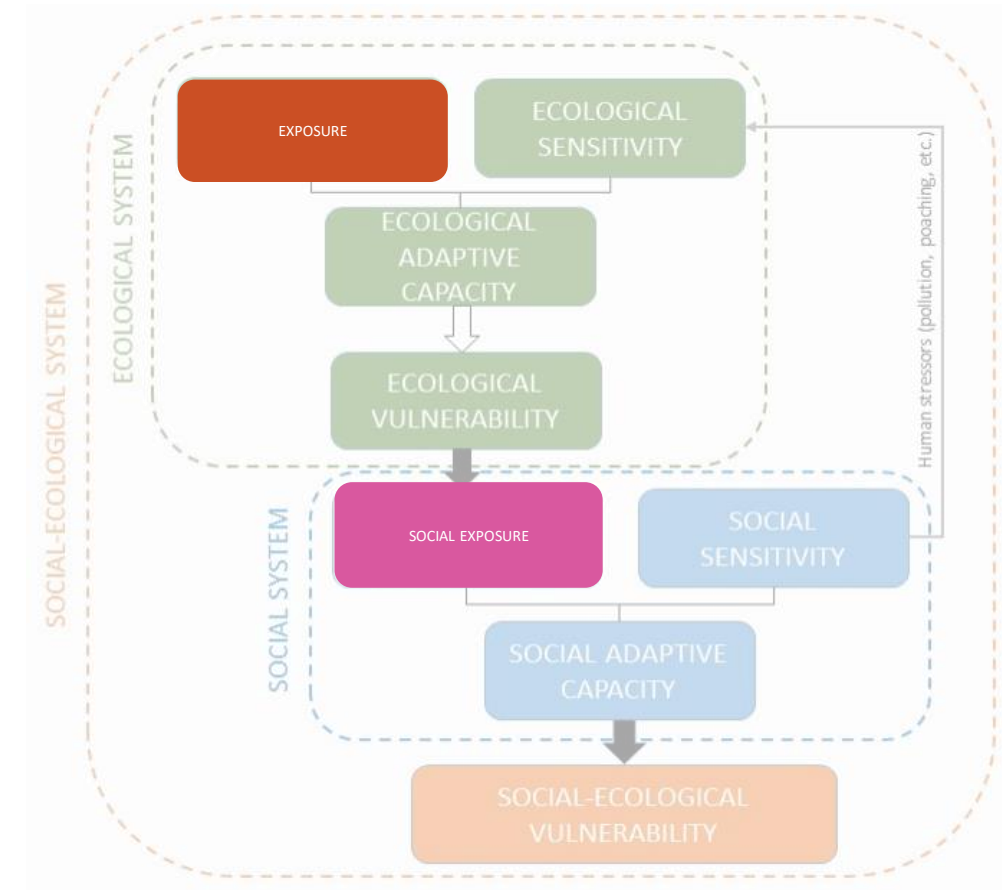
Photo: Ernesto Azzurro

SOCIAL EXPOSURE

Exposure in the social domain is the ecological vulnerability.



Photo: Federico Buralassi



ECOLOGICAL SENSITIVITY

Conditions and characteristics mediating the short term propensity of the ecological domain to be influenced by exposure.



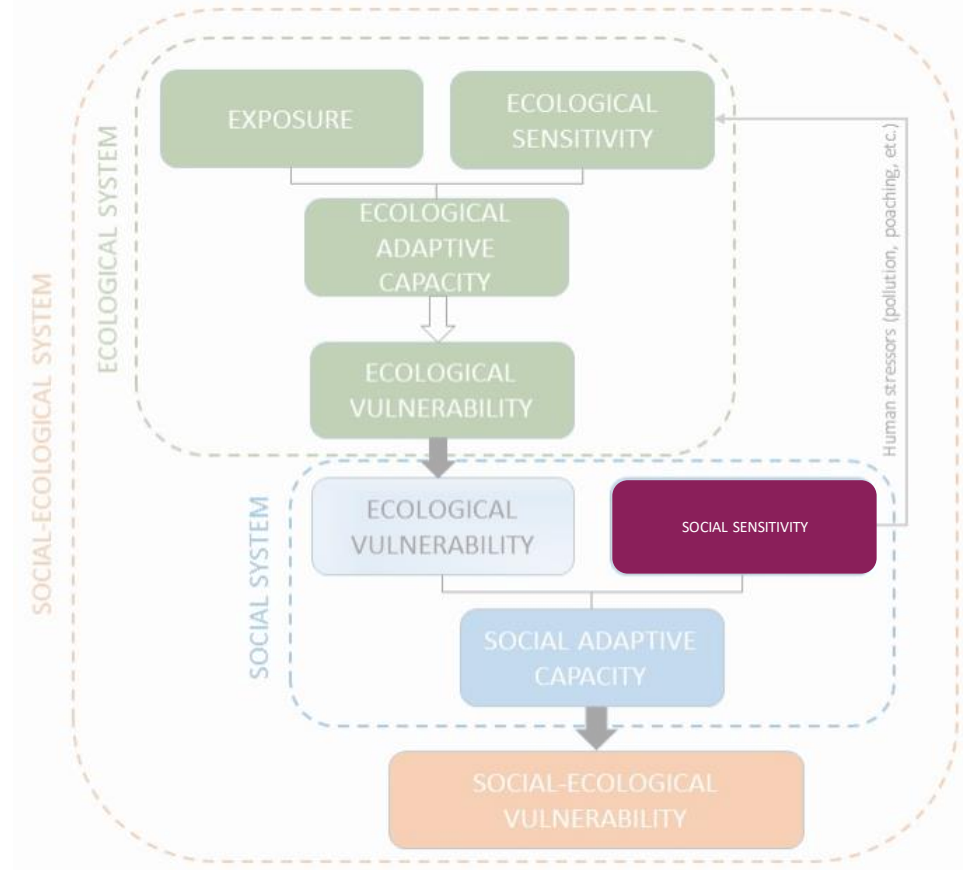
Photo: Alberto Barisani

SOCIAL SENSITIVITY

Conditions and characteristics of the social domain and their dependency on the system's habitats and species.



Photo: Calanques NP



VULNERABILITY DIMENSIONS

ECOLOGICAL ADAPTIVE CAPACITY

Present and future abilities to implement effective and long-lasting responses to changes.

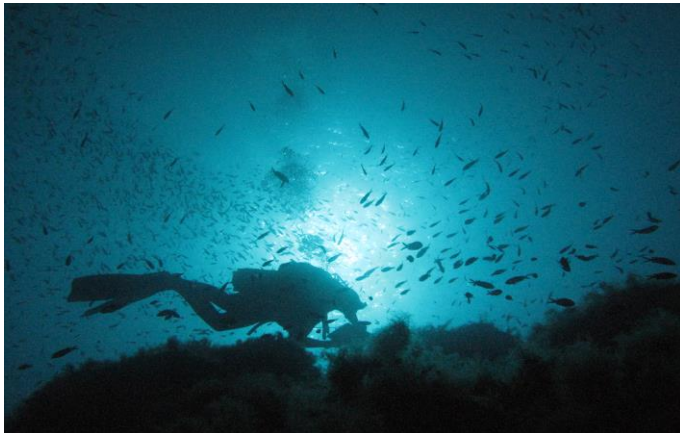


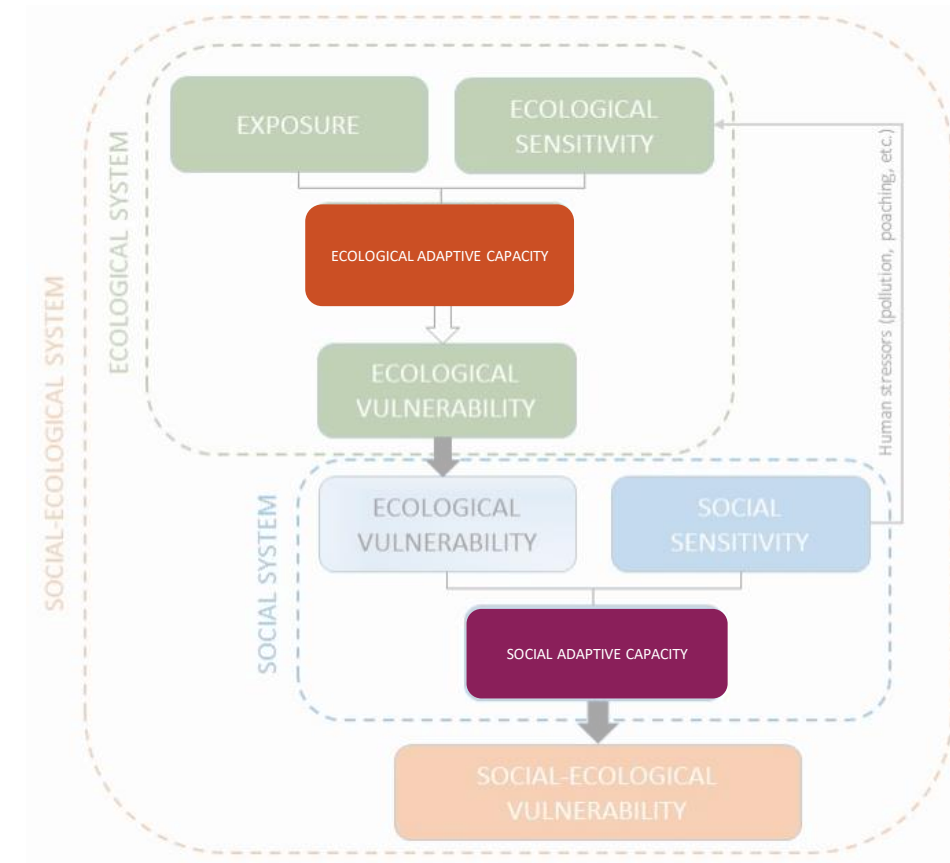
Photo: Ernesto Azzurro

SOCIAL ADAPTIVE CAPACITY

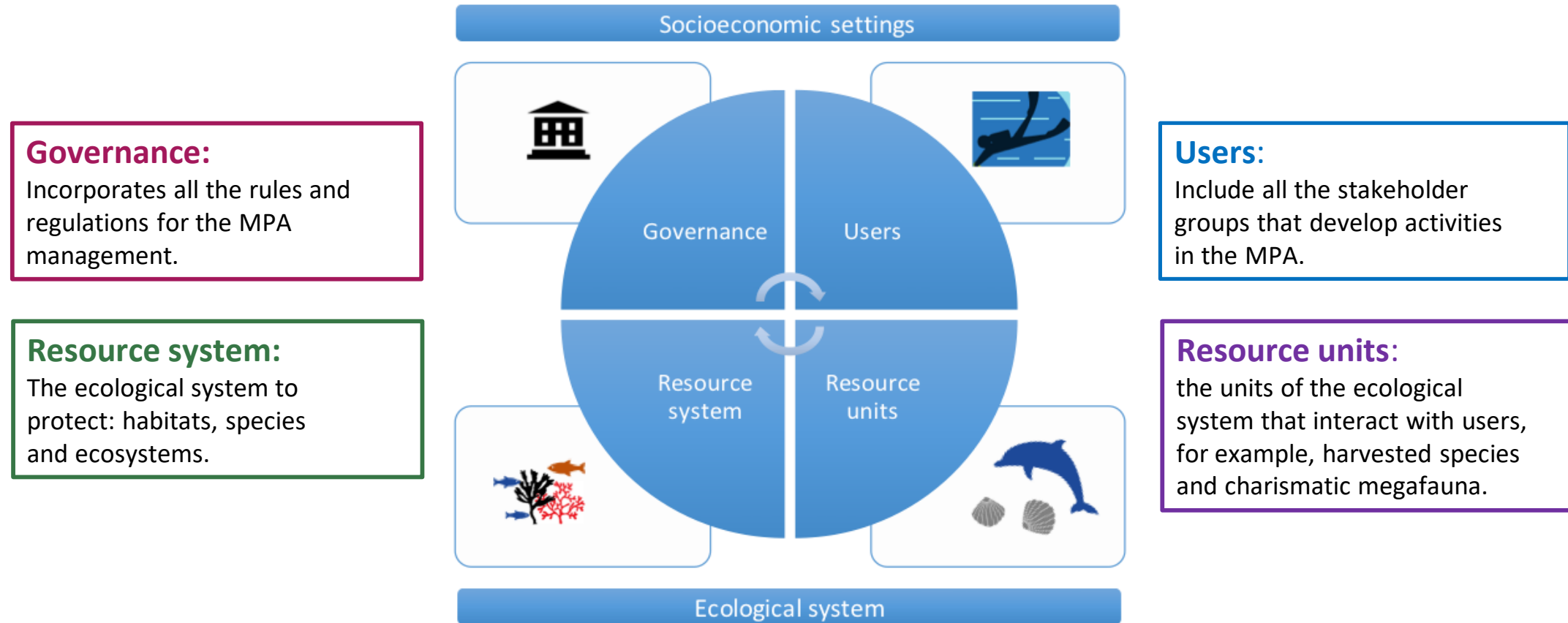
Present and future ability of the users groups to implement effective responses to change by minimizing, coping and recovering from the potential impact of a stressor.



Photo: Calanques NP



The MPA as a social-ecological system



MPA SES, based on [Ostrom, 2009](#)

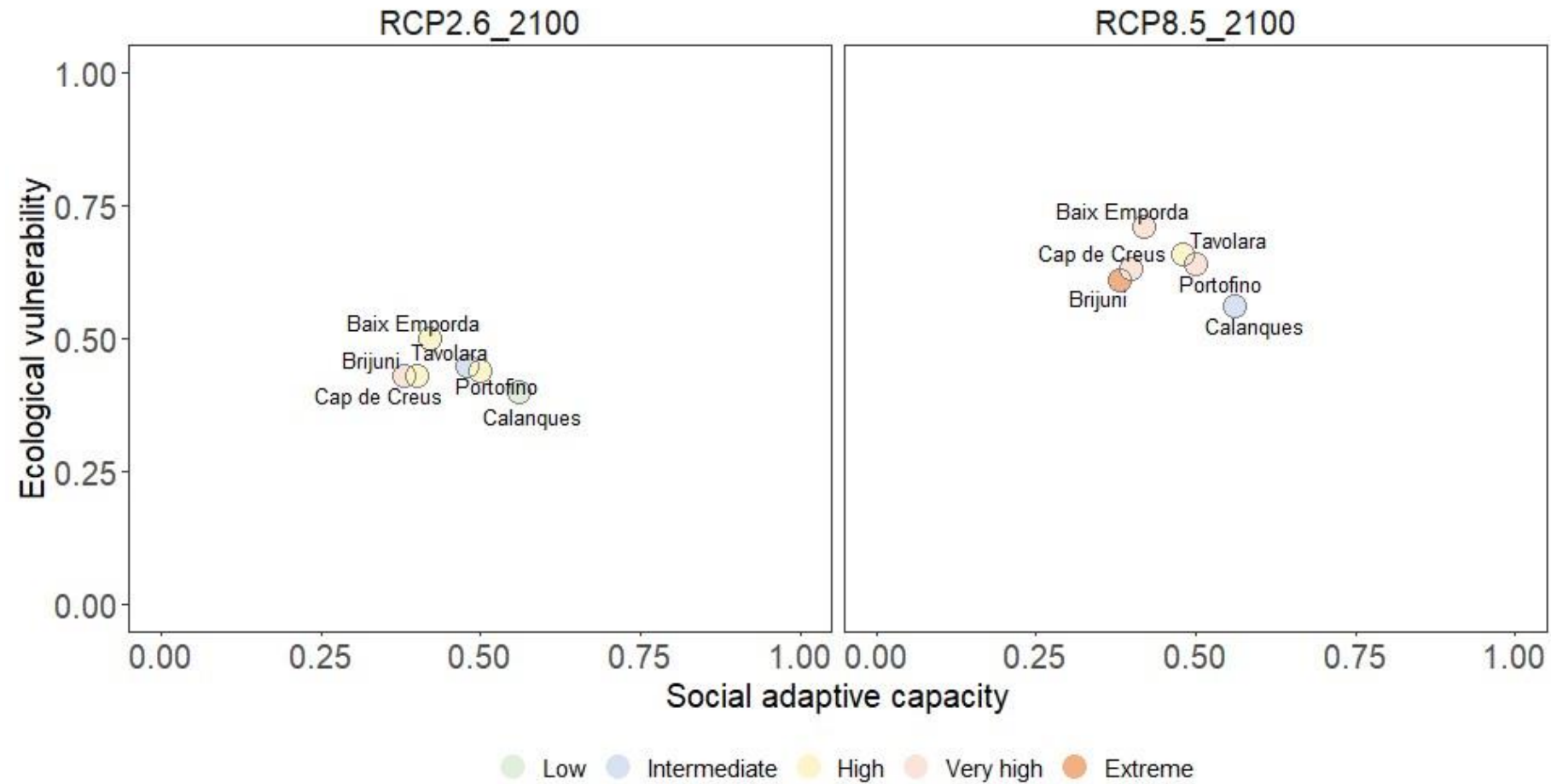
MPA Engage results



Mediterranean partner MPAs

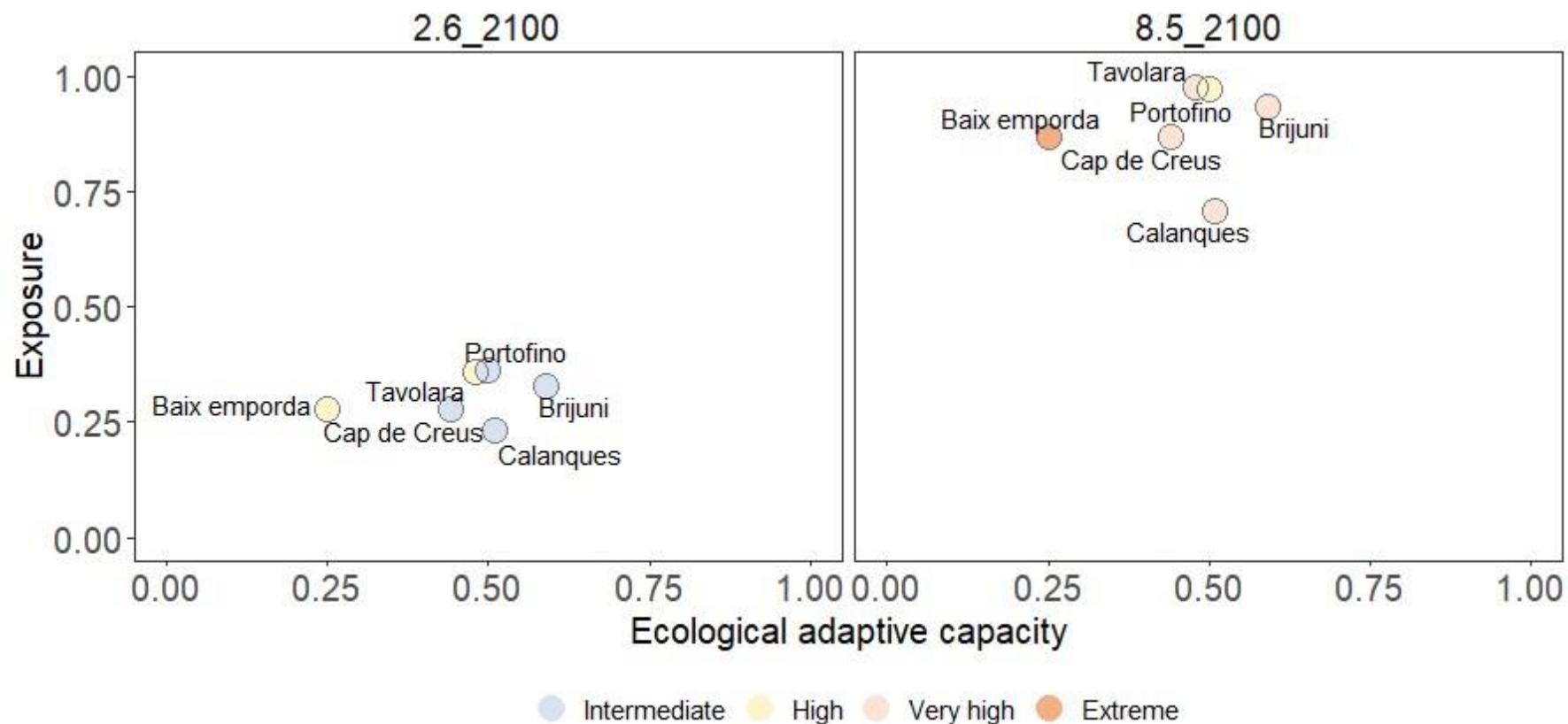
| Vulnerability index (VI) | # of Indicators | |
|----------------------------|-----------------|--|
| Socio-ecological VI | 89 | |
| Ecological VI | 56 | |
| Habitat VI | 15 | |
| Species VI | 15 | |
| Professional fishers VI | 27 | |
| Recreational activities VI | 26 | |
| SST VI | 85 | |
| MHW VI | 85 | |

Socio-ecological Vulnerability Index



Brijuni is the MPA with highest **Socio-ecological vulnerability** while **Calanques** is the least vulnerable of the partners

Ecological Vulnerability Index



*Baix Emporda' is the MPA with highest **Ecological vulnerability** while no MPA stands put as the least vulnerable*



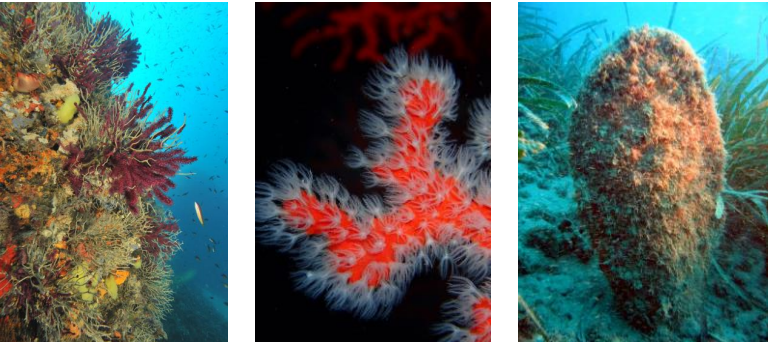
Results for RCPs 2.6, 4.5, 8.5 years 2050 and 2100

Species

N=39

Most vulnerable species:

- Paramuricea clavata*
Pinna nobilis
Corallium rubrum
Posidonia oceánica
- Eunicella cavolini*
Cladocora caespitosa
Patella ferruginea
Savaglia savaglia



Habitat

N=5

Most vulnerable habitats:

- Coralligenous*
Posidonia oceánica
Infralittoral rocky bottom



Users

N=5

Most vulnerable users:

- Divers*
Nautical sector





Standardize and replicable methodology at the Mediterranean level

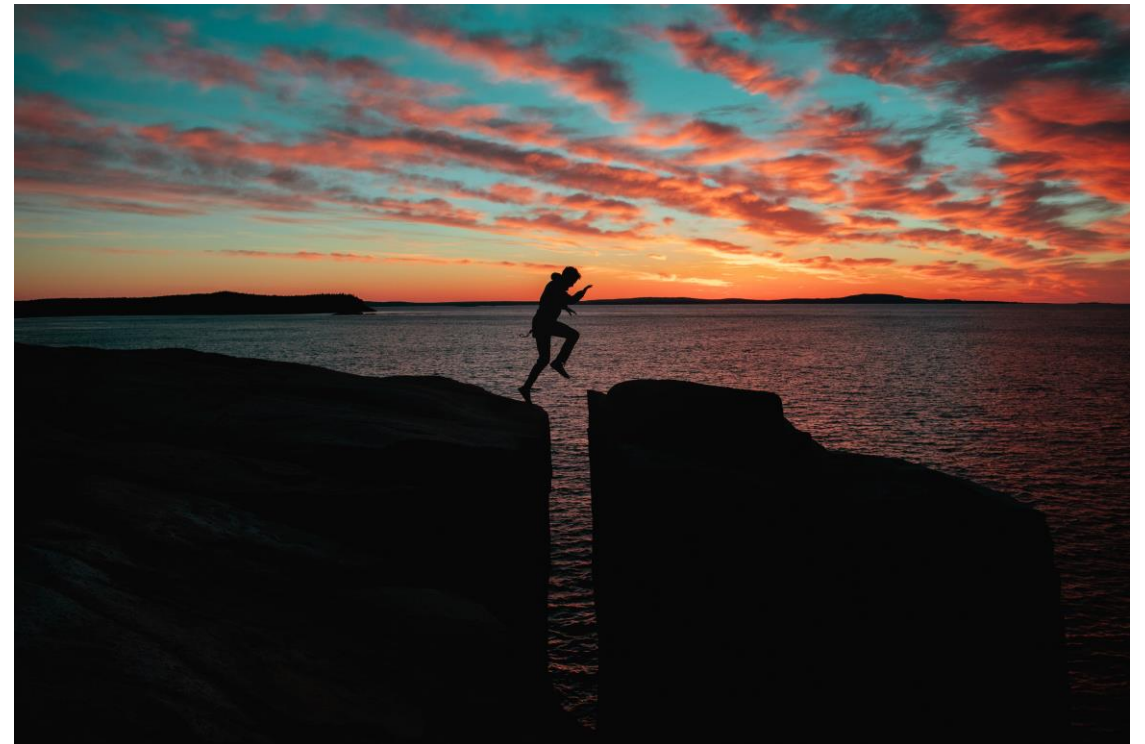
An overall index to evaluate the MPA Vulnerability

A relative ranking of vulnerability scores for the units assessed
(habitats, species, users, etc.)

Vulnerability scores from different analyses are not comparable.

Updating an analysis on an annual basis is easy but requires more
work (not automatic)

Limitation of data availability



Thank You

Interreg
Mediterranean



MPA Engage



@MPAEngage

