



International Water
Management Institute

Bringing solutions to drought monitoring and management

LOUISE SARANT,

RACHAEL MCDONNELL, YESSEF MOHAMMED

MAKRAM BELHAJ FRAJ, KARIM BERGAOUI

GUY JOBBINS, MUSA MCKEE

Innovative water solutions for sustainable development

Food · Climate · Growth

MENAdrought – Morocco, Lebanon and Jordan

**to empower *decision-makers*
to plan for and manage the
impacts of droughts on food
*and water security***



USAID
FROM THE AMERICAN PEOPLE



MENA Drought – 3 pillars required for effective drought management

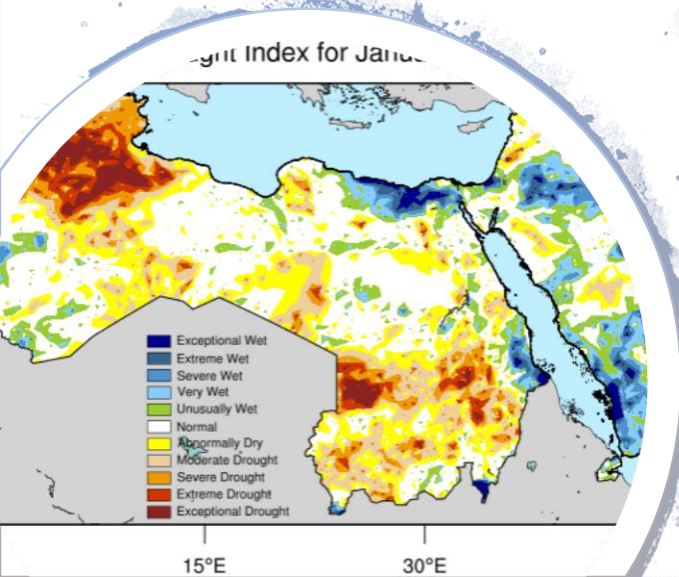
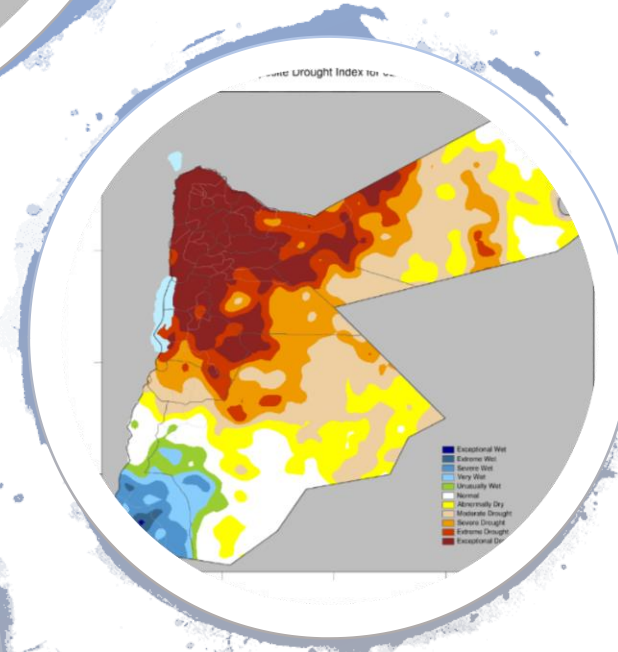
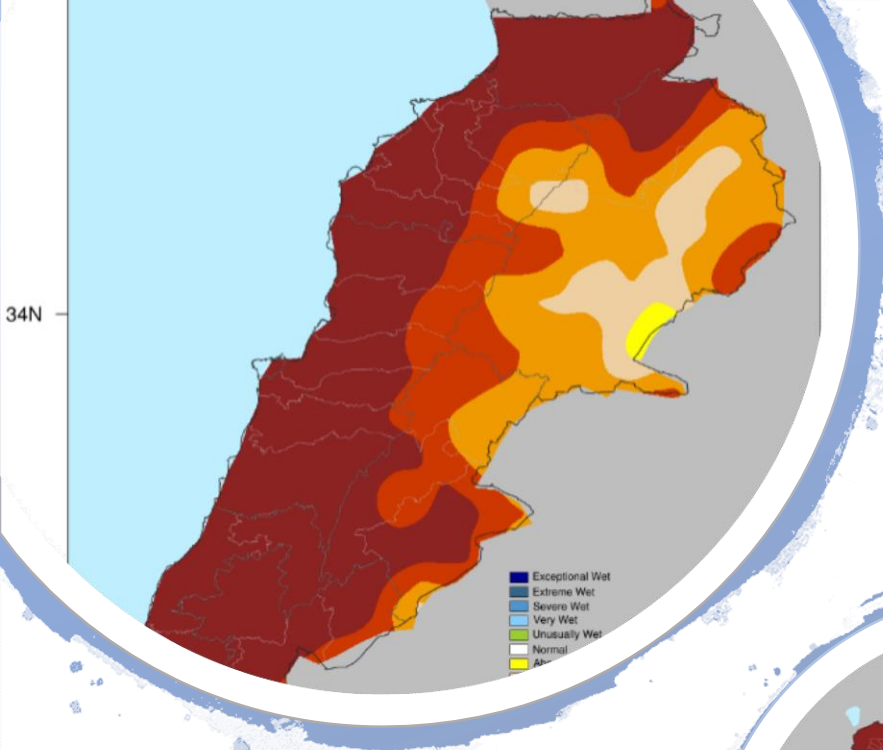


Internationally endorsed 3 pillars of drought management

Pillar 1: Where is there drought and how bad is it?

• We generate drought maps using 4 inputs from satellite and modelled – relative to *normal* conditions at that time of year

- rainfall
- temperature
- soil moisture
- stress of plants



Pillar 2- Who is being most impacted by droughts and why?



Drought is different in Jordan, Lebanon, Morocco

Environmental, cultural, social, economic, political drivers determine the communities and sectors most affected

So need in-depth analysis to ensure action plans are targeted

Pillar 3 – What needs to be done to manage droughts today and to build resilience for the future?

Mitigation for resilience building

Preparedness

Responses





Pillar 3 Mitigation

- Water and agricultural technology packages
- so water is managed more productively event when no drought



Pillar 3 Preparedness – the hard part

- Institutional arrangements that multi-ministerial, interdisciplinary
- Developing policies, action plans, decrees – the who does what and when
- Including the prioritization of who and where the water should be given



Pillar 3 RESPONSES

- Drought maps trigger actions
- Risks and impacts helped through actions
- Drought Insurance helps bring relief



International Water
Management Institute

Thank You

r.mcdonnell@cgiar.org

Innovative water solutions for sustainable development

Food · Climate · Growth