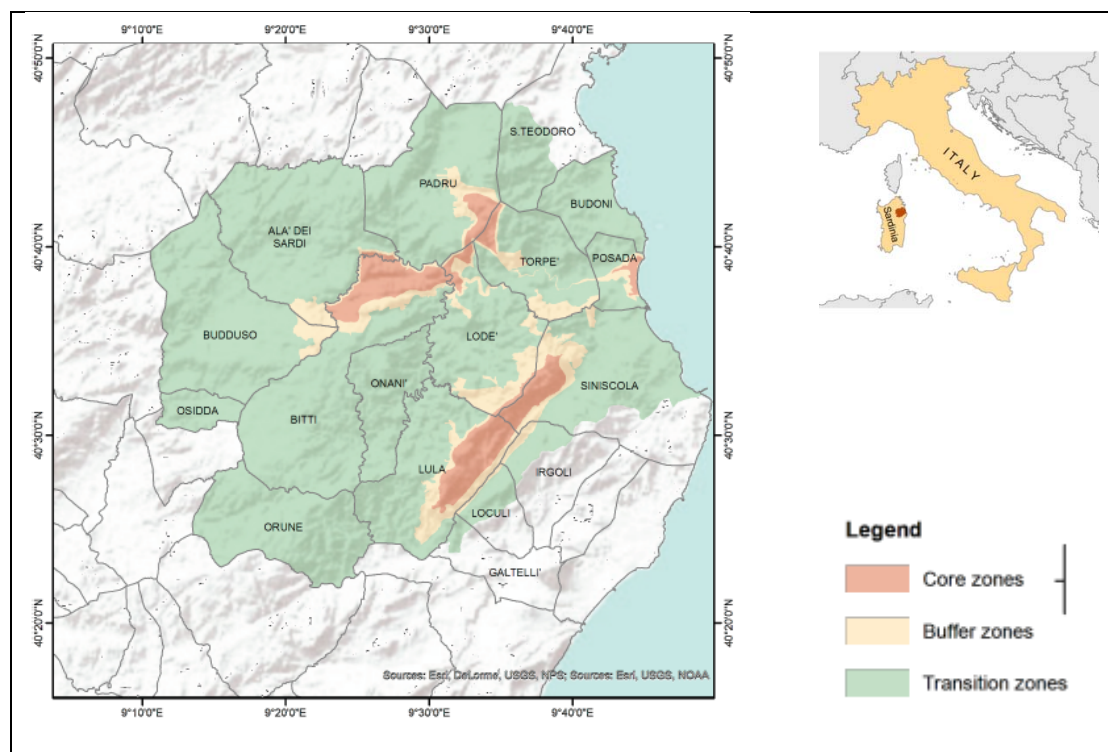


## SUMMER SCHOOL on Integrated Management Approaches and Sustainable Tourism Strategies for Biosphere Reserves

*Tepilora, Rio Posada and Montalbo future MaB UNESCO Biosphere Reserve*  
*Sant'Anna di Lodè (NU) – Tepilora Regional Parck - Sardinia, Italy,*  
**13-20 July 2017**

### PREMISE

The “Tepilora, Rio Posada and Montalbo” candidature to MaB UNESCO Biosphere Reserve has been submitted by the Italian MaB Committee in September 2016, and a decision on its inclusion within the WNBR will be taken on the occasion of the next MAB-ICC meeting in June 2017 in Paris.



The Tepilora, Rio Posada and Montalbo proposed MaB UNESCO Biosphere Reserve is composed by 17 municipalities in the North East of Sardinia and its boundaries are established by the drainage basin of the Rio Posada and the massifs that surround it (from Montalbo to the Alà mountains and Monte Nieddu).

In some respects, the territory of the Reserve embodies the recent radical changes in the relationship between the coast and the interior of the island. However, it also has some unique features that cannot be found anywhere else in Sardinia:

- It has a delta and an associated network of coastal lakes.
- Due to its singular geodiversity, it is possible to find igneous, metamorphic and sedimentary rocks within a few kilometers of each other.
- There are a number of endemic species

In this complex ecological patchwork, the presence of humans – which has left archaeological traces dating back to the Neolithic – has led to the development of a number of cultural and natural landscapes over the course of its troubled history.

The candidate Biosphere Reserve presents itself to the local area as a “workshop for concrete ideas”. It is in favor of examining and comparing the ambitions and plans of the many public and private players that have shown (during the candidature process) and will show (once approval is given) a desire to protect and promote the relationship between man and biosphere.

In the Biosphere Reserve, the intention is to support the development of the green economy in all economic fields, as it promotes and presents prospects of general wellbeing for the community, allows equity, improves ecological integrity, brings about inclusion and participation, fosters resilience, promotes sustainable products and consumption, and makes investments in the future.

## SCOPE

The Summer School seeks to provide a high quality training to post graduate students, young scientists and managers of Biosphere Reserves (BRs) from European countries, more specifically from South Europe and Mediterranean countries, on Integrated Management Approaches and Sustainable Tourism Strategies for Biosphere Reserves. Additionally, the Summer School provides the participants with the opportunity to be informed about the successful procedures of preparing the dossier of the application of the proposed Biosphere Reserve (officially belonging to the [UNESCO Man and the Biosphere Programme, MAB/UNESCO](#)).

The Summer School intends also to highlight the rich natural and cultural heritage of the “Tepilora, Rio Posada and Montalbo” future Biosphere Reserve and, generally of the island of Sardinia.

## OBJECTIVES

The Summer School provides an intensive, multidisciplinary and experiential training aiming to develop the understanding and competences of the trainees on the multiple values of the Biosphere Reserves as "laboratories" and "catalysts" of Sustainable Development. It specifically aims to deepen the understanding and offer insights on

the integrated management approaches and sustainable tourism strategies for Biosphere Reserves and/or other types of designated areas (protected areas, natural parks, etc.).

The Summer School intends also to stimulate the participants, through interactive and project work methodology, to contribute to the elaboration of a first management/action plan of the new Biosphere Reserve, concerning in particular its development and logistic functions, in particular sustainable tourism.

## ORGANISATION

The Summer School is co-organised by:

- the UNESCO Regional Bureau for Science and Culture in Europe
- *The UNESCO Chair and Network on Sustainable Development Management and Education in the Mediterranean of the National and Kapodistrian University of Athens;*
- *The Mediterranean Information Office for Environment, Culture and Sustainable Development (MIO-ECSDE) and especially, its Educational Initiative MEDIES;*
- *The Tepilora Regional Park, coordinator of the future Rio Posada and Montalbo Biosphere Reserve.*

## METHODS

The Summer School will combine presentations, discussions and interactive sessions (excursions, meetings with local experiences, guided visit to the territory). Participants will be introduced to the integrative methodological framework for preparing integrated management plans and will also work in groups, under the guidance of the invited professors and experts. Their exercises will be focused on suggestions and recommendations for the sustainable management of the Biosphere Reserves, using as a study case the island of Sardinia.

## PROGRAMME

The Summer School will include:

- Theoretical presentations and workshops on the principle, methods and practices of the sustainable management of the Biosphere Reserves.
- Focused work on the case study of the Tepilora, Rio Posada and Montalbo future BR and its nomination form.
- Guided group work on suggestions for a management plan of BRs.
- Introduction to the Education for Sustainable Development approaches in BRs.

- Field visits and work in the future BR territory
- Meetings and discussions with local authorities and stakeholders.
- Visits to farms, workshops, cultural sites of the territory.
- Project work finalized to define draft documentations useful to the Tepiورا, Rio Posada and Montalbo future Biosphere Reserve for the definition of its managing plane concerning development and logistic functions and in particular sustainable tourism.

*The detailed daily program will be available and circulated soon.*

### **PARTICIPANTS PROFILE**

The expected number of trainees is estimated to be 20-25.

Participants are expected to be:

- graduating university student or recently graduated of all disciplines, in particular: Natural and Environmental Sciences, Urban and land planning, Social and Economic Sciences, Tourism.
- young scientists or researcher on Sustainable Development and Management,
- employers in management bodies of Biosphere Reserves and/or other designated areas or in private/public organization working on Sustainable Development and Management.

### **CERTIFICATION**

The trainees successfully completing the Summer School will be awarded a certificate of participation provided by the UNESCO Chair Sustainable Development Management and Education in the Mediterranean of the National and Kapodistrian University of Athens (Greece).

### **FEES**

Thanks to the support provided by the sponsors of the Summer University, no inscription fees will be requested. The organization will cover:

- accommodation and meals
- connection with the airports and ports of Olbia and Alghero/Sassari
- all local transports
- equipment and guide for excursions and visits

The travel cost to reach and leave Sardinia will be borne by participant.

## TRAVEL INFORMATION

All the participant shall arrive:

- by car, directly to Sant'Anna di Lodè (NU – Sardinia - Italy) – seat of the summer school – in the morning of the 13<sup>th</sup>
- by plain, landing in the morning of the 13<sup>th</sup> of June at the airport of Olbia or at the airport of Alghero/Sassari: a summer school shuttle-bus will collect them and drive them Sant'Anna di Lodè (NU – Sardinia - Italy) – seat of the summer school
- by ferry, arriving in the morning of the 13<sup>th</sup> of June at the harbor of Olbia or at the harbor of Sassari: a summer school shuttle-bus will collect them and drive them Sant'Anna di Lodè (NU – Sardinia - Italy) – seat of the summer school

In the afternoon of 20<sup>th</sup> of June summer school shuttle-busses will bring the participants to the Olbia or Alghero/Sassari airports or harbors.

Particular logistic need will be manage, if possible and indicated in advance.

## ACCOMODATION

The trainees will be hosted in a farmhouse hotel in Sant'Anna di Lodè (NU – Sardinia - Italy) that will be also the main seat of the summer school. Accommodation will be in shared rooms with bathroom. Breakfast, lunch and dinner will be prepared by the farmhouse restaurants. Some pocket lunch will be foreseen in the excursion days.

Any food intolerance or special request has to be indicated in advance, they will be second as possible.

## REGISTRATIONS

Send your registration form to Arch. Paolo Maylander, director of the Tepilora Regional Park at [info@parcotepilora.it](mailto:info@parcotepilora.it)